



# EQUITABLE HOUSE

EC4

12,485 sq ft high-quality contemporary office  
accommodation adjacent to Monument & London Bridge



## INSPIRED SPACE

Equitable House is a prominent contemporary building, adjacent to Monument station and London Bridge. The office space is column free and offers fantastic views towards the Thames and profile on London Bridge. The 1st and 2nd floors have been extensively refurbished and offer high-end contemporary finishes.



View towards Monument



Building exterior



Reception



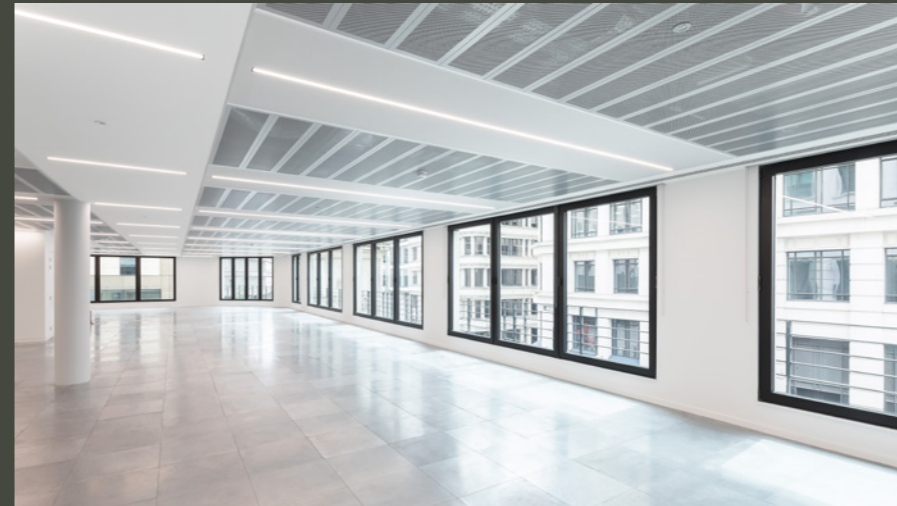
Front entrance



View towards the Thames



“FANTASTIC VIEWS TOWARDS THE THAMES  
AND PROFILE ON LONDON BRIDGE”



View of Monument



View towards the Thames



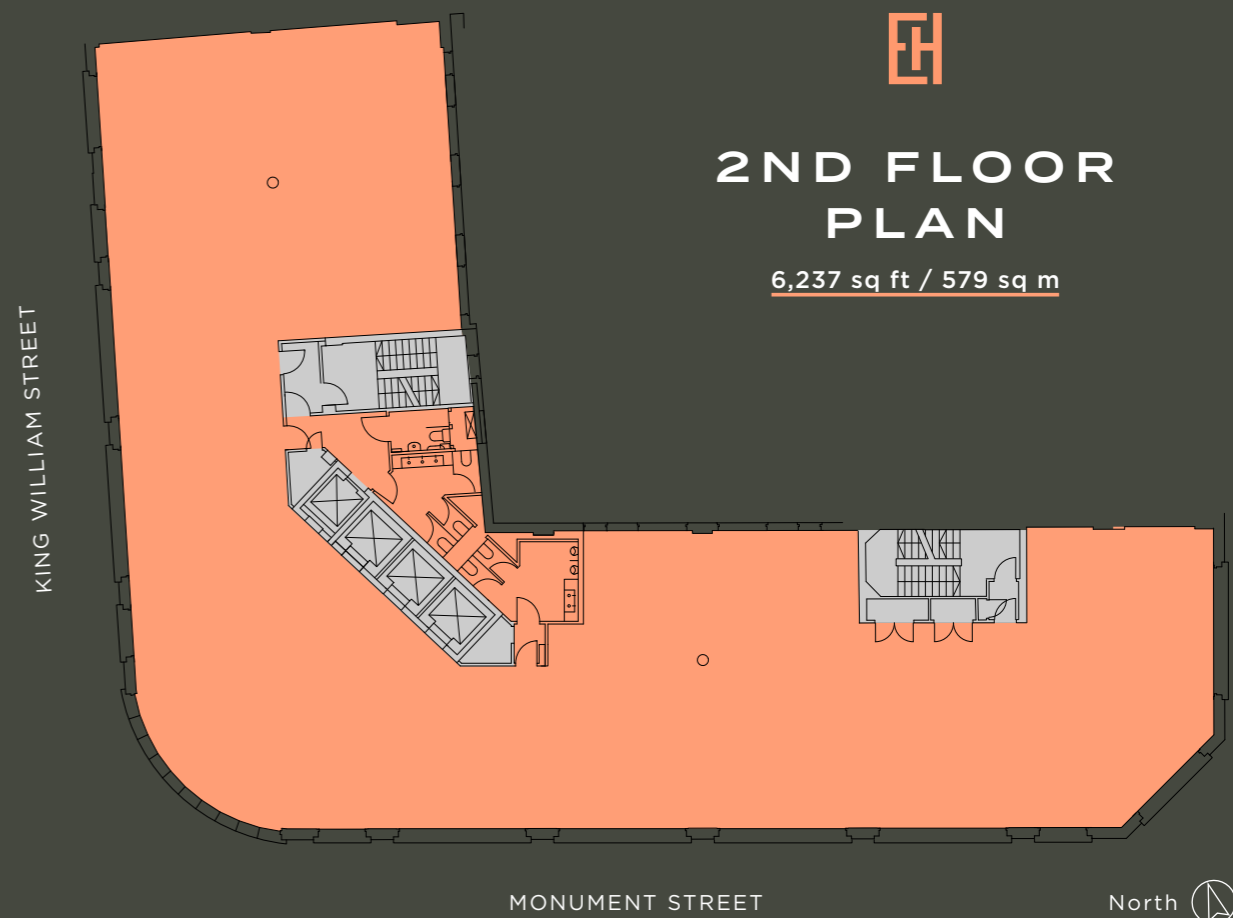
Cat B CGI

\*\* c.10 weeks lead in time for Cat B delivery



## AVAILABILITY

Floor	Sq ft	Sq m
2nd	6,237	579
1st	6,248	581
<b>Total</b>	<b>12,485</b>	<b>1,160</b>



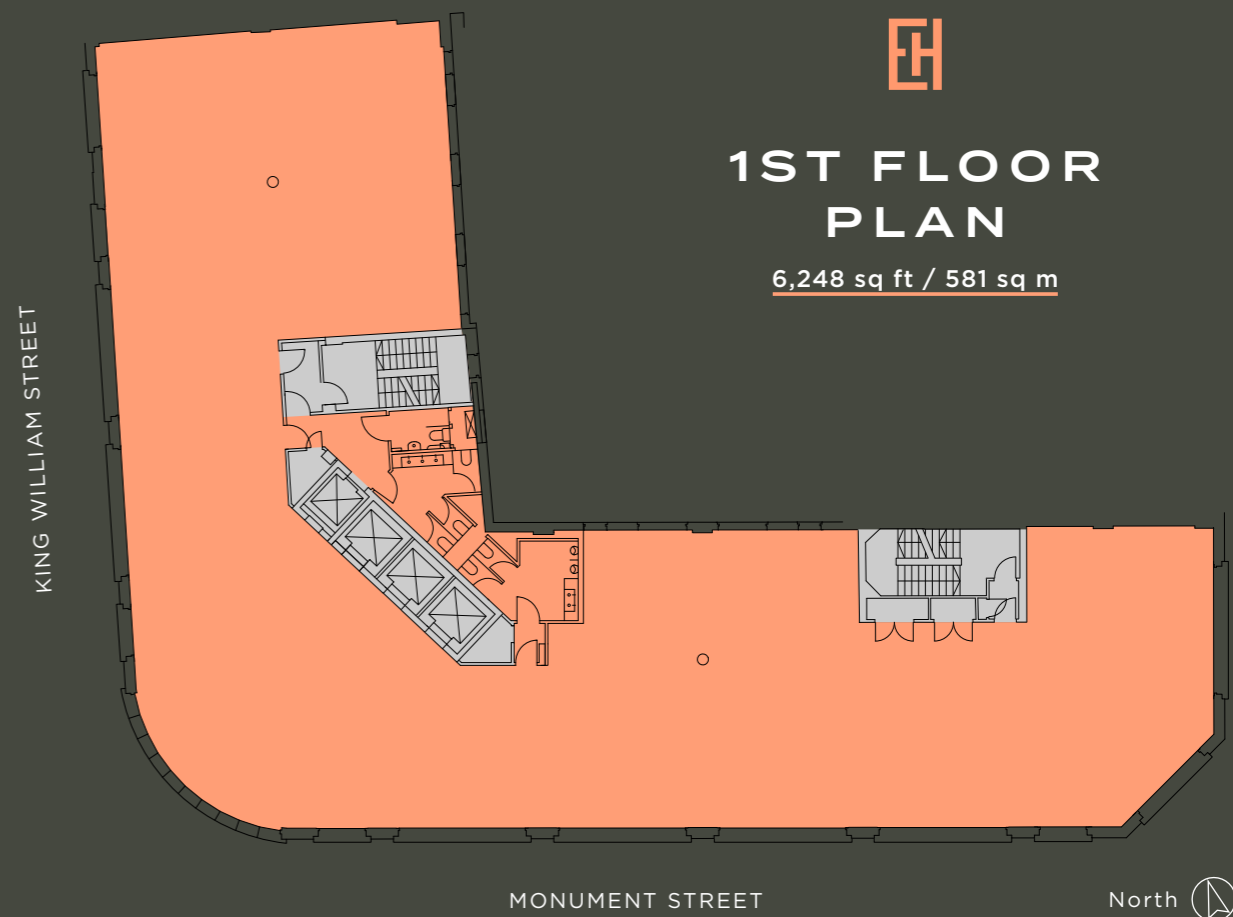
## 2ND FLOOR PLAN

6,237 sq ft / 579 sq m

KING WILLIAM STREET

MONUMENT STREET

North



## 1ST FLOOR PLAN

6,248 sq ft / 581 sq m

KING WILLIAM STREET

MONUMENT STREET

North



## END OF TRIP FACILITIES



Bike storage



Shower



## SPECIFICATION



Double Height Reception



Refurbished CAT A floors



Occupancy density - 1 person per 10 sq m



Newly refurbished WCs



4-pipe Fan Coil Air Conditioning



LED lighting



2.7 metre floor to ceiling height



150mm raised floors



32 cycle spaces and 39 lockers



5 showers



3 x 13 person passenger lifts



1 fireman's lift / goods lift



## FIT FOR A KING

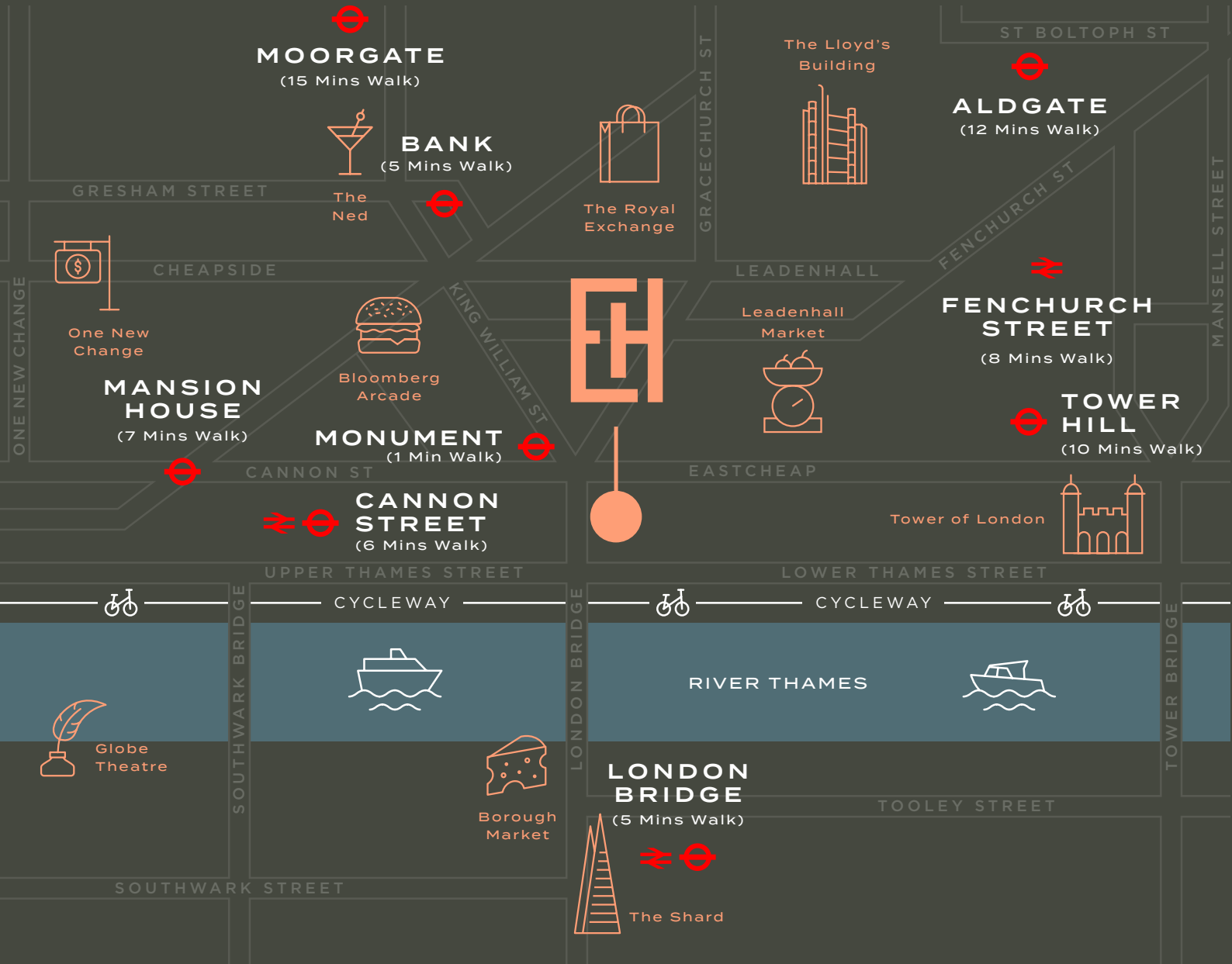
King William Street leads to an incredible range of cafés, restaurants and retail. Nearby, Bloomberg Arcade, The Ned and Borough Market offer fine dining and exceptional street food. The Royal Exchange and One New Change provide a plethora of high quality retail.





# JUST THE TICKET

Equitable House benefits from excellent connectivity and transport links.



FREDDIE MACGREGOR  
 freddie.macgregor@eu.jll.com  
 +44 7872 107539



NICK GOING  
 nick.going@eu.jll.com  
 +44 7756 500466

MISREPRESENTATION ACT/COPYRIGHT/DISCLAIMER - JLL, for themselves and for the Lessor of this property, whose agents they are, give notice that (1) the particulars and any further information communicated by any means to potential Lessees of the property described in the particulars, or their advisers, in connection with the possible letting of the property are provided solely for the purpose of assisting potential lessees in deciding whether they wish to proceed with further investigation of the property and do not constitute either the whole or any part of the invitation, offer or contract for lease of the property; (2) all descriptions, dimensions, references to condition and necessary permissions for use and occupation and other details are given in good faith and are believed to be correct as at the date of the particulars (or the date of the relevant information if earlier). However, potential lessees are not entitled to rely on them as statements or representations of fact but should satisfy themselves by searches, enquires, surveys and inspections or otherwise with regard to the accuracy of such details. No responsibility or liability is or will be accepted by JLL, the lessor of the property or any of their respective subsidiaries, affiliates, directors, officers, representatives, employees, advisors, or agents for any loss or damage suffered by any party, resulting from reliance on the particulars or any other information communicated by any means to that party, or its advisers, in connection with the possible letting of the property. No person in the employment of JLL or the lessor has authority to make or give any representation or warranty, express or implied, in relation to the property, April 2021.